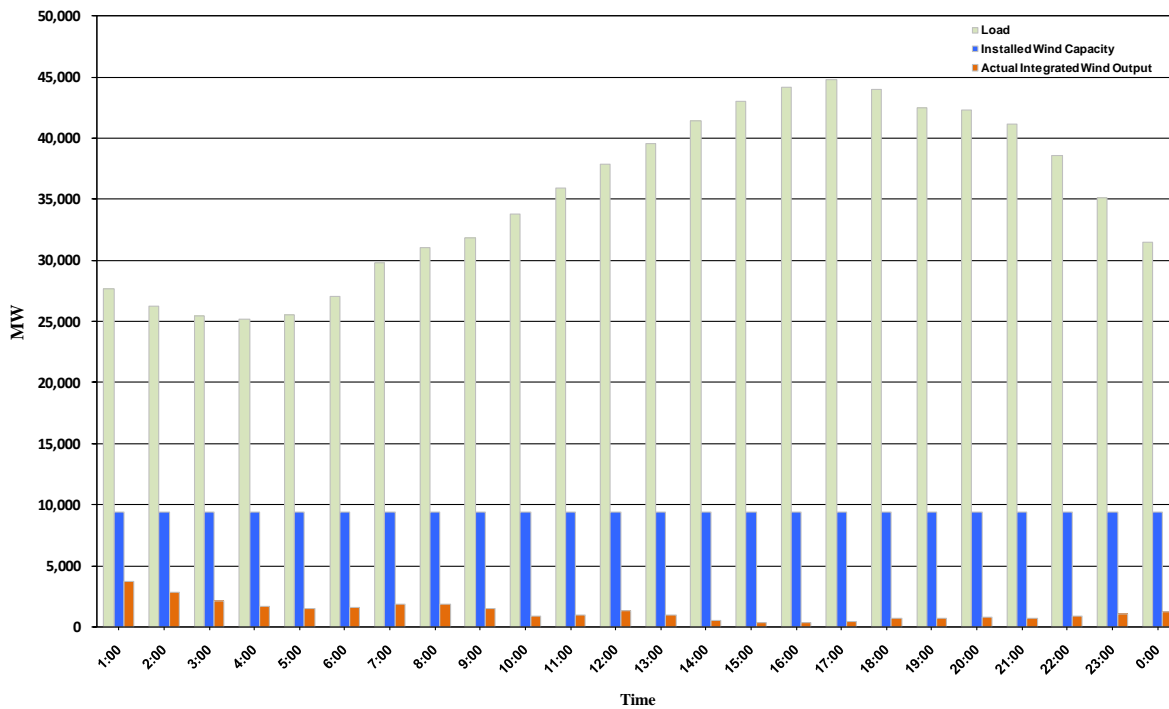




ERCOT Grid Operations Wind Integration Report: 10/11/10

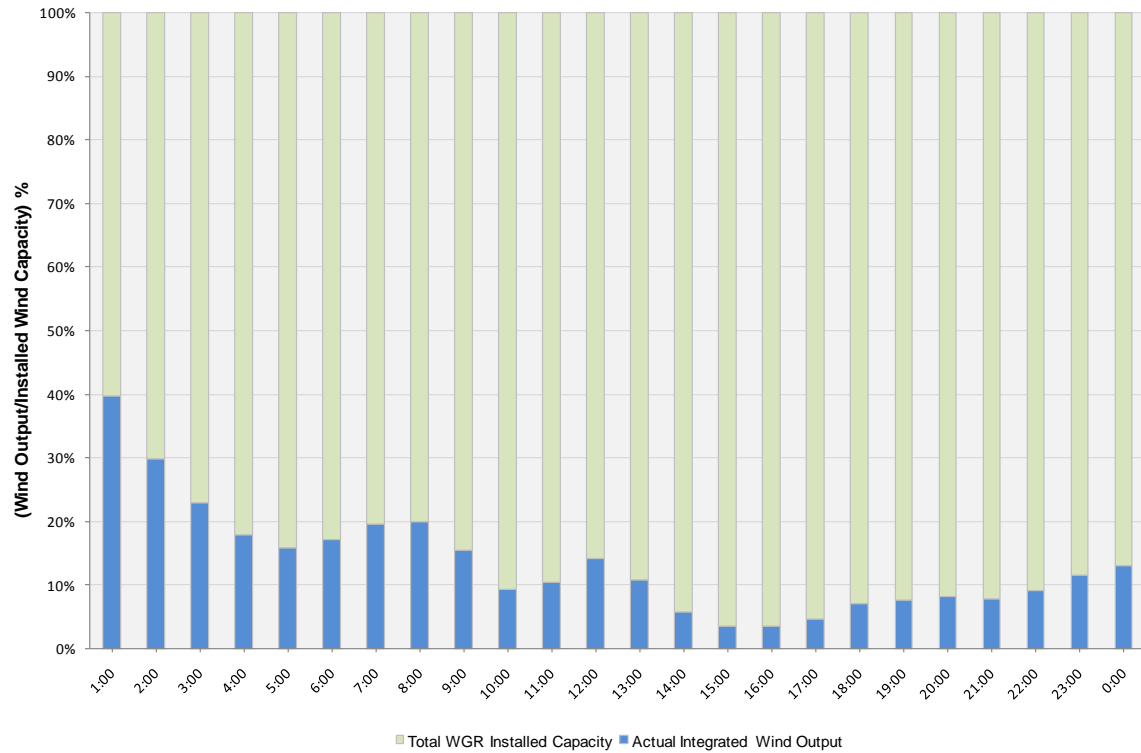
Peak Load	44,810 MW
Load Peak Hour	17
Wind Record 06/12/10	7016 MW
Max Wind value	4429 MW
Wind Peak Hour	00:00:12
Wind Integration %	15.52

Hourly Average Actual Load vs. Actual Wind Output
10-11-2010

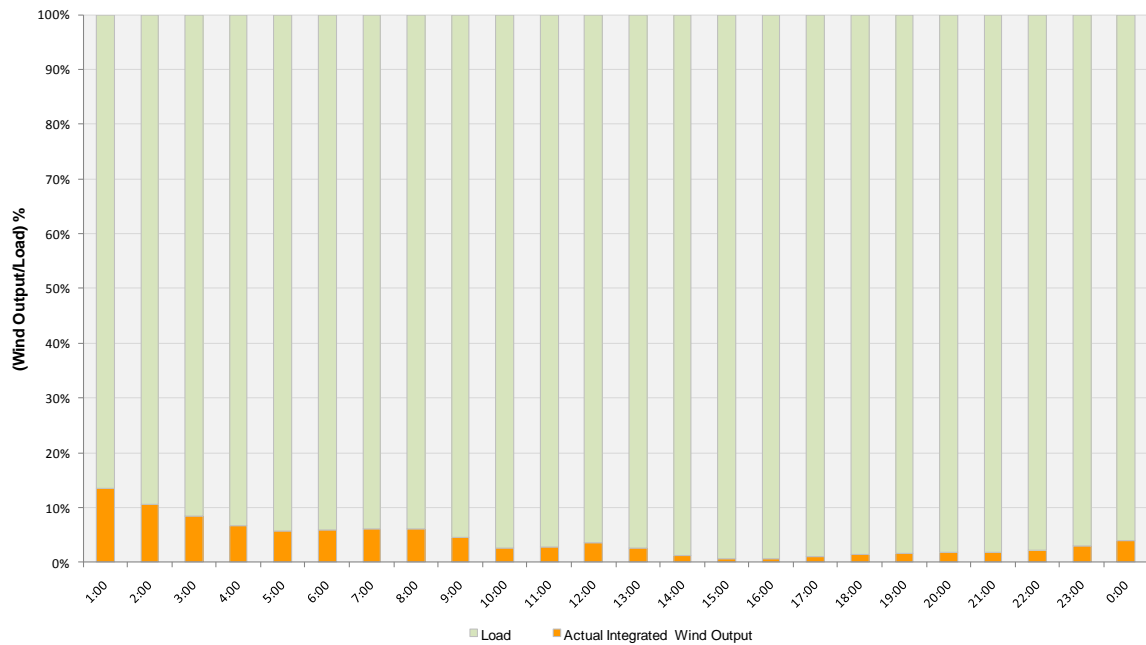




Actual Wind Output as a Percentage of the Total Installed Wind Capacity
10-11-2010



Actual Wind Output as a Percentage of the ERCOT Load
10-11-2010





ERCOT Load vs. Actual Wind Output 10/04/10 - 10/11/10

